



## LED ring light incident illuminator

MA 114-029-... (attachment Ø 25 mm)

MA 114-033-... (attachment Ø 40 mm)



1 white segment

MA 114-029-14 / MA 114-033-11



6 white segments

MA 114-029-18 / MA 114-033-12

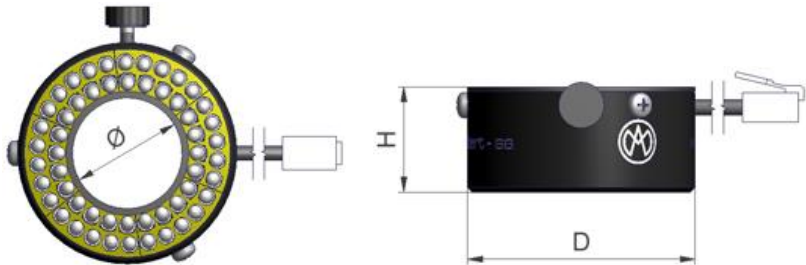
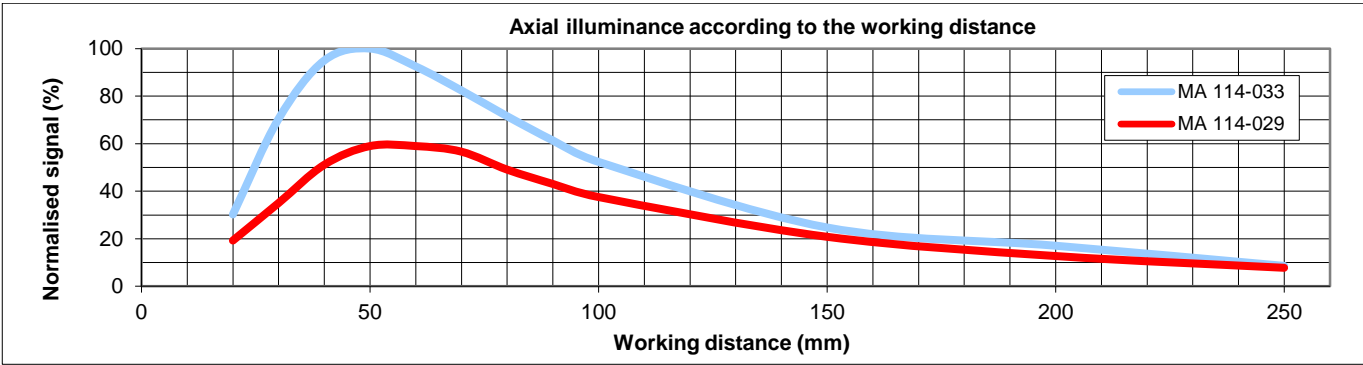
Because it directly influences the results quality of an optical measuring process, a special care should be taken to the illumination. The LED ring light incident illuminator especially suits applications with **microscopes and video systems**. The light incidence combined with a high intensity helps to get the best contrast possible, also on low reflective samples.

- 2 attachment diameters: **Ø 25** and **Ø 40 mm**.
- White light for standard applications with optimal colour rendering (red light available for monochrome applications).
- **Segments driver** creates directional light, useful for surface inspection and defects detection.
- Efficiency on a **large working distance** (up to 20 mm).
- **High luminous power** (adjustable).
- Light source life increased until **100'000 hours** (50x longer than a halogen lamp) and lower consumption.

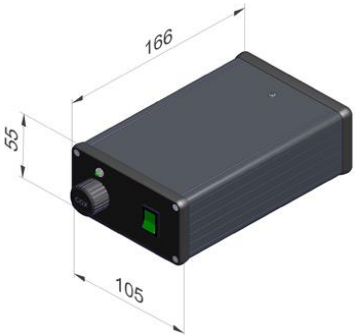
Technical data:

	MA 114-029-14 / -18	MA 114-033-11 / -12
Color	White / T=5000°K	White / T = 5000°K
Power supply	Optimized lighting	Optimized lighting
Main voltage	220-240V, 50-60 Hz	220-240V, 50-60 Hz
Consumption	6W	6W
Light intensity	Adjustable to 20'000 lux *	Adjustable to 30'000 lux *
Uniformity	Field of view Ø=20: <9% *	Field of view Ø = 20: <12% *
	Field of view Ø=10: <3% *	Field of view Ø = 10: <4% *
Working distance	Recommended > 50 mm	Recommended >30 mm
Lifetime	Up to 100'000 hours	Up to 100'000 hours

\* for a illumination distance of 50 mm



Type	Ø / D / H en mm
MA 114-029-...	25 / 50 / 23
MA 114-033-...	40 / 71 / 25



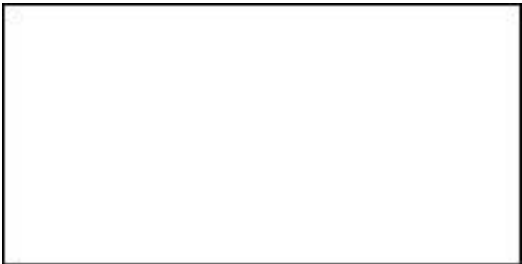
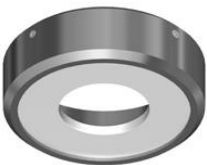
Accessories:

Contact:

Holder MA 155-008-...



Light diffusor PFC-027-...



Technical changes reserved.